



conviso®
SMART

MARIBO®

SEEDS & SCIENCE

GROWER INFORMATION MANUAL

 **DLF**
Beet Seed

WHAT IS CONVISO® SMART TECHNOLOGY?

CONVISO® SMART is an innovative weed control system for sugar beet.

Convviso® Smart consists of:



1

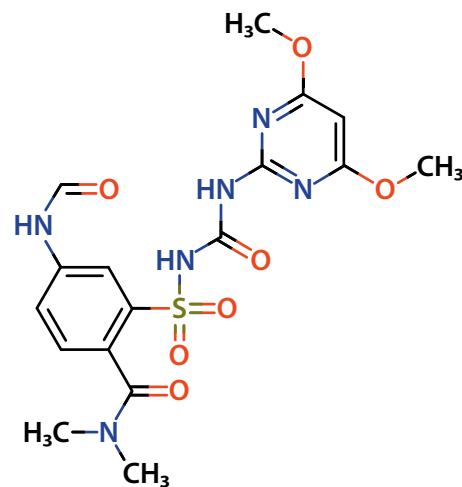
SMART MARIBO sugar beet varieties tolerant to the herbicide CONVISO® ONE



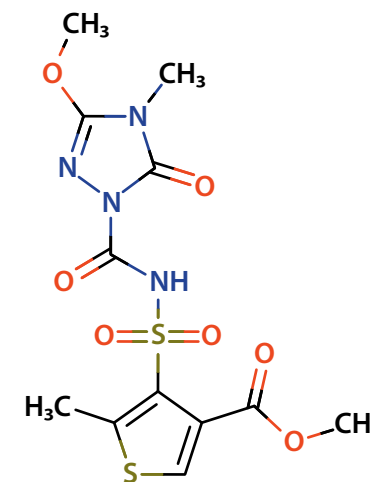
2

CONVISO® ONE Bayer herbicide - the new ALS-inhibitor broad-spectrum herbicide from Bayer

Foramsulfuron (FSN) 50 g/L



Thiencarbazon (TCM) 30 g/L



What is Conviso® One?

A ready-to-use liquid formulation based on two ALS-inhibitor compounds:

- Foramsulfuron (50 g/L) - leaf activity
- Thiencarbazon - methyl (30 g/L) - leaf and soil (residual) activity

WHAT IS CONVISO® ONE?

conviso®
ONE

CONVISO® ONE

- Maximum dose rate: 1.0 L/ha per year
- Controls a wide range of broadleaf and grass weed
- Residual effect: 10 – 20 days
- It can be combined with any classic herbicide registered for use in sugar beet.



HOW WERE MARIBO SMART VARIETIES DEVELOPED?

MARIBO Smart varieties

- The conventionally-bred hybrid has been developed as part of a joint initiative between a breeding company and Bayer.
- A single ALS tolerant individual was found naturally after a vast number of individual plants were screened.
- Through classic breeding methods the ALS inhibitor tolerance was integrated into the best sugar beet varieties.

WHAT ARE THE BENEFITS OF THE CONVISO® SMART SYSTEM?



Reliability and efficacy

- All main common broadleaf weeds
- All main grasses without need of specific graminicide
- Weed beet and suppression of volunteer potatoes

Simplification of sugar beet management

- Reducing complex tank-mixes
- Reducing the number of applications (3-5 > 2) saving time and sprayer capacity
- Replacing traditional sugar beet herbicides withdrawn from the market

Improved application flexibility

- Less dependent on beet growth stage and weather conditions
- Wide application window (beet growth stage from cotyledon till 8 true leaves)

Best possible crop safety

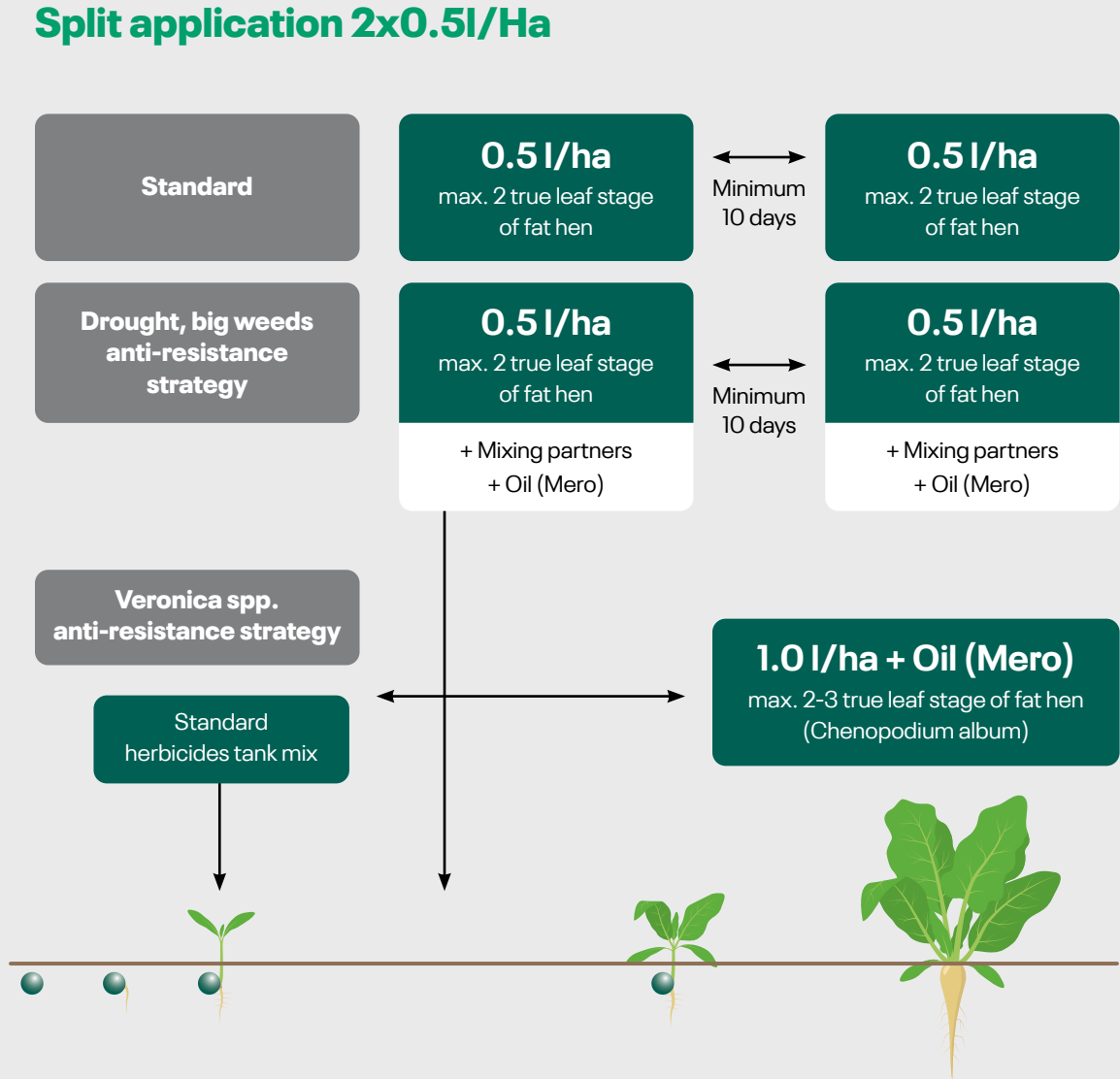
- Reduce stress resulting in a more vigorous crop
- Preserving the full yield potential

Reduced impact on the environment

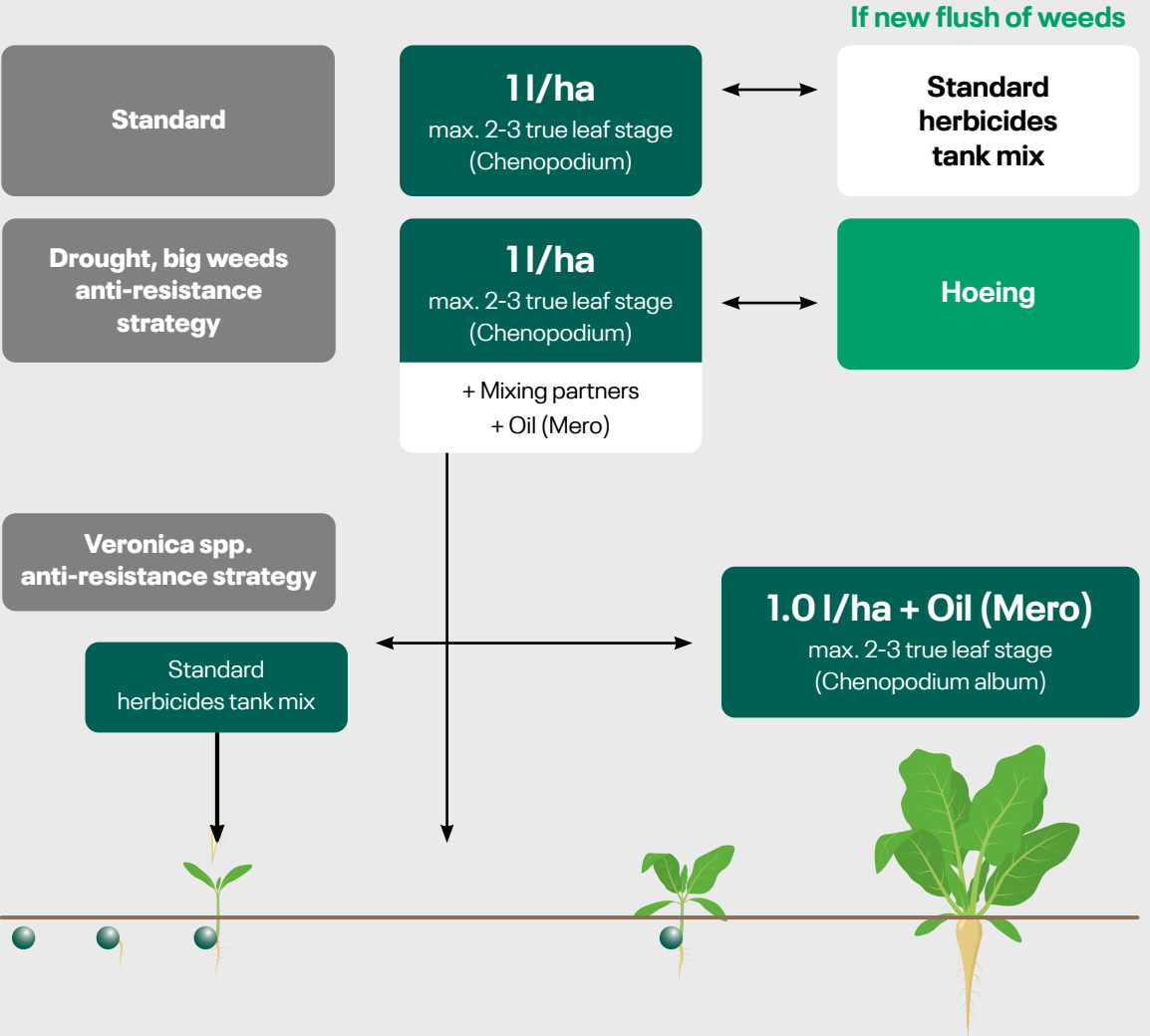
- Less frequent applications
- Smaller quantities of active ingredients
- The new herbicide can lead to a significant reduction of active substances and CO2 released into the environment

APPLICATION OF CONVISO® ONE HERBICIDE -

Split application 2x0.5l/Ha



Single application 1x1l /Ha

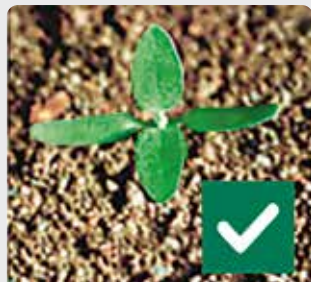


APPLICATION OF CONVISO® ONE HERBICIDE -

Single application 1x1l /Ha



TOO EARLY



CORRECT



TOO LATE

GOOD PRACTICE FOR CONVISO® ONE

- CONVISO® ONE registered application window from cotyledon stage till 8 leaves of sugar beet
- Maximum yearly dose rate: 1.0 l/ha must be adapted country per country (label recommendations)
- Start to spray when weeds have 2 true leaves not in average, but when the first weeds get 2 leaves
- Split application gives best results
- Vegetal oil addition (0.5-lL/Ha) increase efficiency specially by using Bayer adjuvant MERO
- Used mixing partners with leaf activity in weeds control program reduces the risk of resistance
- Wait for the second wave of emergence of weeds for the second application, except if efficiency is not complete for the first one after 10 days

GOOD TO KNOW!

- Cold condition reduces the speed of efficiency of active ingredients in weeds, first effects could be visible 7 to 12 days after spraying, the full disappearance could take 4 weeks
- Optimal temperature for spraying between 10-25°C
- Shake the can well before use
- Dilute completely the Conviso® One before adding mixing partners or oil
- Water volume recommended: 200 to 300 /Ha
- Water pH: 5 – 7
- Time needed before rain: 4-6 hours



HOW TO DISTINGUISH BOXES AND SEEDS



Dark green top and lid

Variety name followed by **SMART**

Green bottom with **CONVISO® SMART** logo



MARIBO classic seed:
internal colour is grey



MARIBO SMART seed:
internal colour is purple



TAKE CARE

- Rinse your sprayer with an ALS inhibitor immediately after use
- Never apply Conviso® One on conventional varieties
- Be careful: Never blend conventional varieties and Smart varieties

HOW TO MANAGE MY FIELD SOWN WITH MARIBO CONVISO® SMART VARIETIES

How to manage my field sown with MARIBO Smart varieties:

- The beets that are regrowing after harvest in following crop must be destroyed.
- You need to use non ALS product, in trials synthetic auxins seems to give a good efficiency. Manuel removal could be needed.
- Conviso® one is really efficient to destroy conventional wild beet, but the bolters coming from the Smart variety must be removed from the field. These could not be destroyed in the future with Conviso® one or normal herbicides.

The goal is no bolters!



Golden rules to succeed with your Maribo Smart variety

- ✓ Keep separate conventional and Smart seed
- ✓ Follow the rules for application of CONVISO® ONE
- ✓ Prefer the split applications, respect timing and use the full dose
- ✓ Apply at good stage of weeds
- ✓ Used integrate mixing partners and oil when necessary
- ✓ Integrate weed management risk of resistance across your crop rotation

CONVISO®
SMART



SEEDS & SCIENCE

Contact: **DLF Beet Seed ApS**

Højbygårdvej 31 • 4960 Holeby
Denmark • www.dlfbeetseed.com

